

Enhancing ESA partnership and ADB Strategy 2030

Chiara Bronchi, Deputy Director General
conc. Chief Thematic Officer, SDTC/SDCC

European Consultation Workshop: ESA/ESRIN,
11th & 12th September 2018

*Future Prospects for Satellite Environmental Information
in support of Development Aid Activities*

Strategy 2030

PROSPEROUS
INCLUSIVE
RESILIENT
SUSTAINABLE

ASIA AND THE PACIFIC



Fragile and conflict-affected situations



Small island developing states



Low-income and lower middle-income countries



Upper middle-income countries

WHAT OPERATIONAL AREAS WILL ADB FOCUS ON?



Addressing remaining poverty and reducing inequalities

human development and social inclusion, quality jobs, education and training, better health, social protection



Tackling climate change, building climate and disaster resilience, and enhancing environmental sustainability

low greenhouse gas emissions development, approach to building climate and disaster resilience, environmental sustainability, water–food–energy security nexus



Promoting rural development and food security

market connectivity and agricultural value chain linkages, agricultural productivity and food security, food safety



Strengthening governance and institutional capacity

public management reforms and financial sustainability, service delivery, capacity and standards



Fostering regional cooperation and integration

connectivity and competitiveness, regional public goods, cooperation in finance sector, subregional initiatives



Accelerating progress in gender equality

scaled-up support for gender equality; women's economic empowerment; gender equality in human development, decision-making, and leadership; reducing time poverty for women; strengthening women's resilience to shocks



Making cities more livable

integrated solutions, funding for cities, inclusive and participatory urban planning, climate resilience and disaster management

For projects in the pipeline jointly working on: SPADE Spatial Data Analysis, Explorer, Crop Insurance, Climate Resilience, Disaster Risk Reduction, Marine and Coastal, and Water Resources.



Making cities more livable
integrated solutions, funding for cities, inclusive and participatory urban planning, climate resilience and disaster management

ADOPTING EO FOR:



Tackling climate change, building climate and disaster resilience, and enhancing environmental sustainability

low greenhouse gas emissions development, approach to building climate and disaster resilience, environmental sustainability, water–food–energy security nexus



Promoting rural development and food security

market connectivity and agricultural value chain linkages, agricultural productivity and food security, food safety



Fostering regional cooperation and integration

connectivity and competitiveness, regional public goods, cooperation in finance sector, subregional initiatives

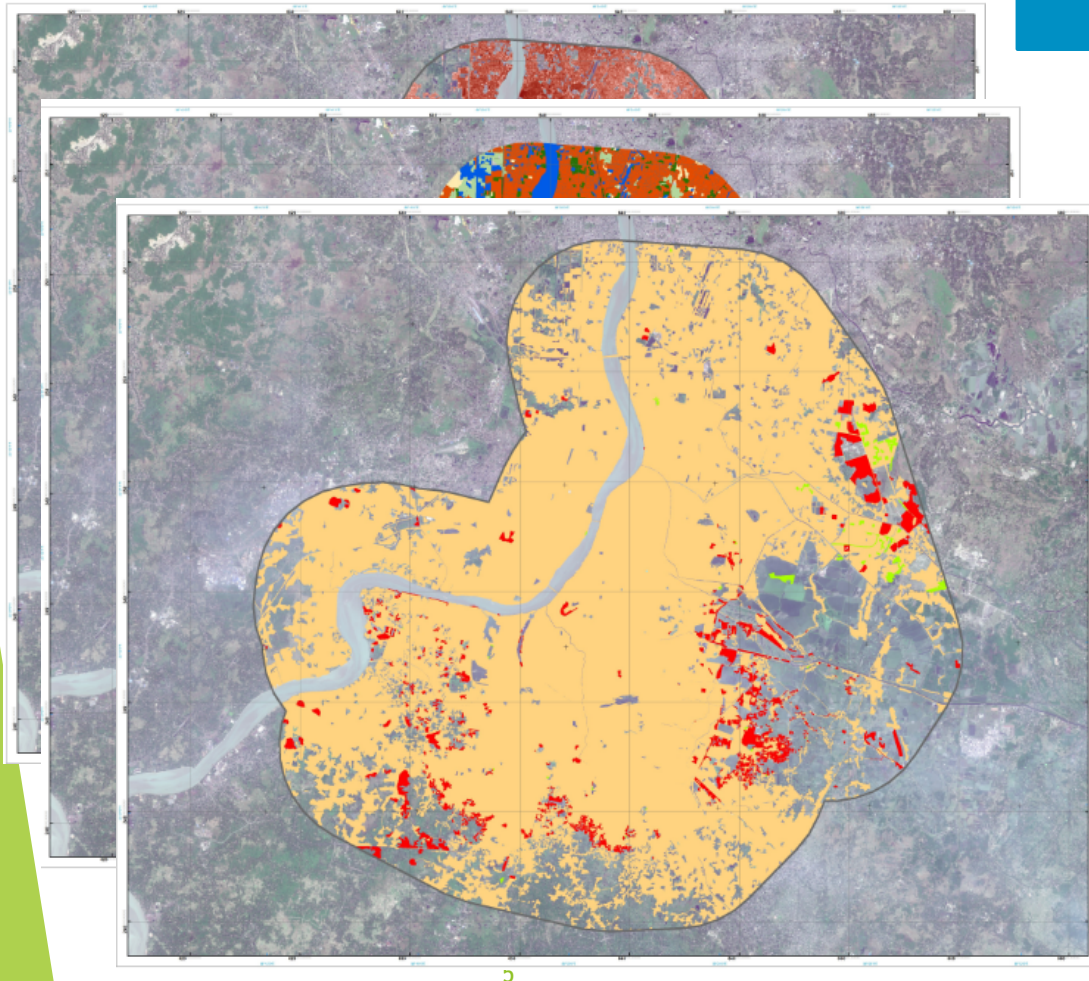
IND: KOLKATA



EO4SD UBAN Supported Kolkata Environmental Improvement Investment

SARD DECIDED TO
PROCURE MORE
ON ITS OWN TO
INCREASE CITY
RESILLIENCE

- Flood Extent (inventory)
- Flood Hazard (susceptibility)
- Product 3: Flood Risk (vulnerability)
- Climate change Impact Maps (coastal storm surge and sea level rise)



WAY FORWARD IN PARTNERSHIP

MORE UPTAKES LIKE THE ONE IN KOLKATA
EXPECTED, INTERNAL AND CLIENT DEMAND DUE TO
INCREASE

THE PARTNERSHIP WITH ESA IS KEY TO SCALE UP
OUR SUPPORT TO RDs AND DMCs AND MAINSTREAM
THE USE OF SBT/EO

APPRECIATION TO ESA FOR PROVIDING THE
CURRENT SUPPORT AND INITIATE DIALOGUE FOR
FURTHER STRENGTHENING AND ENHANCING OUR
COLLABORATION

THANKS FOR YOUR ATTENTION

Chiara Bronchi

OIC Chief of Governance Thematic Group and
Deputy Director General, Thematic Cluster, SDCC

cbronchi@adb.org